



South West Wales Soaring Club Sites Guide - Issue 7 : June 2024

Introduction

The South West Wales Soaring Club (SWWSC) is based in the Swansea area and services an area covering sites in Pembrokeshire, West Glamorgan, Powys and Mid Glamorgan. Due to the scattered nature of our membership, our sites are seldom crowded. On spring and summer weekends with perfect flying conditions, the number of pilots on our hills often numbers less than a dozen!

Our club is thriving, and membership is growing monthly. We are now around the 200 plus members. We hold occasional informal educational lectures; social meetings and an annual parachute repack. Check one or all the following, Website-forum, Facebook page and Telegram for details. In addition, there are regular committee meetings.

Several of our hills are exceptionally large and provide for excellent soaring and XC flights. South West Wales is fortunate in having a plethora of sites within easy reach for everyone. Many of the sites are of outstanding natural beauty and do not generally suffer from overcrowding.

Access to the sites has been negotiated and maintained through the hard work of sites officers and committee members past and present.

For some sites a fee is payable, these are part of the agreement with the landowner and should be paid on entering the site even if you don't fly!

The site fee is per person including those who tag along with the pilot - No exceptions or excuses.

Some of the sites listed are still being negotiated or have no formal agreement to fly. If you have any doubts about the current state of play, then get in touch with the sites officer or any club officer to check.

We all have a duty to ensure that we do nothing to jeopardise our access to the sites.

Follow the country code!

Park sensibly

Do not climb over fences - Please use a gate or a stile!

Be courteous to landowners, members of the public and fellow flyers.

Remember to pay any fees applicable on ENTRY to the sites.

Do not disturb livestock or wildlife!

Fly safely and stay within your capabilities!

Most accidents are avoidable and are often due to over eagerness (forgetting to clip in, forgetting to do up leg loops etc.) or exceeding one's experience (Flying when the conditions are too strong, showing off etc). Not only are accidents bad news for you but they reflect badly on our sport and may even threaten our access to high profile sites like Rhossili. With all the sites on offer we are sure you will enjoy many hours of good safe flying in South West Wales.

This Guide

The purpose of this guide is for Club Members unfamiliar with the area to use our main sites, **please do not copy or distribute to non-members**

Powered, Hang & Paragliding

The South West Wales Soaring Club has several active powered aficionados. There are several take off sites that have been negotiated. If you wish to fly powered, please talk to the Powered Liaison Officer – details on the website.

Radios

The Club use the radio frequency **143.725** to communicate on sites, please observe radio protocols.

Flying Midweek

If you intend flying during the week, you must check NOTAMS/CANP for any restrictions. If no restrictions, then you must log on to <https://canp.logans.me.uk/> and register your intention to fly and which site. If possible, do this before 20:00 the evening before flying.

Please do not assume someone else has done this, it's a simple and easy process, so no excuses!

Some other useful information

In the guide, we have added a what3words as location markers. This is now used by most of the emergency services, including the UK Coastguard to pinpoint you if you need them for any reason! Its 3 words that give a grid reference on the app on your phone or computer.

Revisions

Please advise the Sites Officer of any revisions that may be needed to this guide.

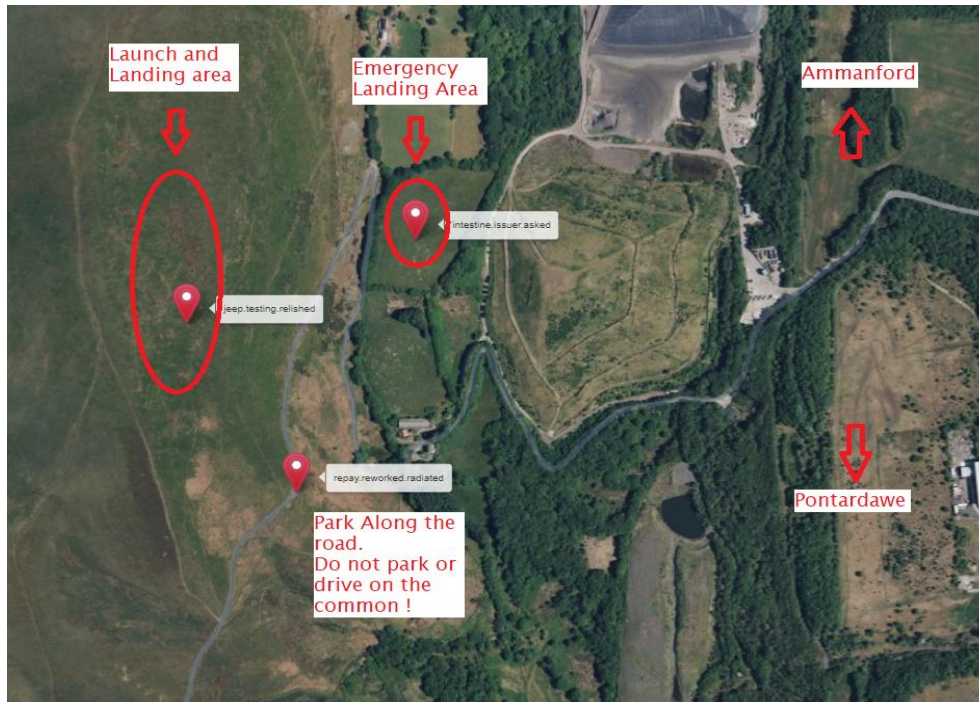
Quick Guide

Abernant – E (090*) Open site
Bryncaws – E-SE (090*- 135*) Members only
Cwmafan – SE-SSW (135*-200*) Members only
Cwmparc – NNE-ENE (020*-060*) Open site
Fan Gyhirych – SW-W-NW-NE (220*-050*) Members only
Fan Hir – NNE-E (023*-070*) Open site
Ferryside – SW-WNW (220*- 290*) Members only
Graig Fawr – WNW-NNW (290*-330*) Open site
Heol Senni – NNE-ENE (023*- 070*) Open site
LLetty Siac – W-WNW (250*- 290*) Members only
Marros Down – SSW-SSE (165*- 195*) Members only
Moel Feity – E (090*) Open site
Newgale – WSW-WNW (260*-280*) Open site
Rhiw Wen – NNW-NNE (335*-025*) Open site
Rhossili – WSW-WNW (250* - 290*) Members only
Seven Sisters – NW-N (310*-360*) Members only
Southerndown – SW (200*-230*) Open site



Link to Membermojo to join. Monthly or annually.

Abernant (Bryn Mawr) Open site



Site Info

Minimum pilot rating – Club Pilot + 50hrs (This site should not be flown by inexperienced pilots or experienced pilots without a site briefing.)

Wind Direction – E (090*)

Height A.M.S.L – 1050ft / 350m

Notam Site Code – 7.052

Directions

Turn north at the traffic lights in the centre of Pontardawe taking the A 474 towards Brynamman. After about 2km turn left opposite the Travellers Well pub and continue uphill for about 4km. At the crossroads turn right and after a few hundred metres park just before the road heads round the face of the hill.

What3words location & Directions

Take off - jeep.testing.relished

Parking - repay.reworked.radiated

Emergency Landing - intestine.issuer.asked

Landowner & site Fees

No fee. The West Glamorgan Commoners have responsibility for this site, we do not have formal permission to fly here. Be polite if you are approached by anybody!

Rules

- 1. No flying during the lambing season (March - April) if there are sheep on the hill.**
- 2. Do not drive onto the common and park without obstructing the road**

Take off & Landing

Take off is shown on the map. Top landing is large and undefined just be aware of where you are as there are power lines and fences in the area. There is no official bottom landing If you bomb out there is an emergency landing field (E-LZ on map)

There is a rubbish tip, mine spoil-heap and trees to avoid at the bottom.

If you do bomb out it means you are not experienced enough to fly here!

Hazards

Be aware of the power cables and poles running along the face of the hill, they also run close to the parking area. There is no official bottom landing field. Hence the reason that this site should not be flown by inexperienced pilots.

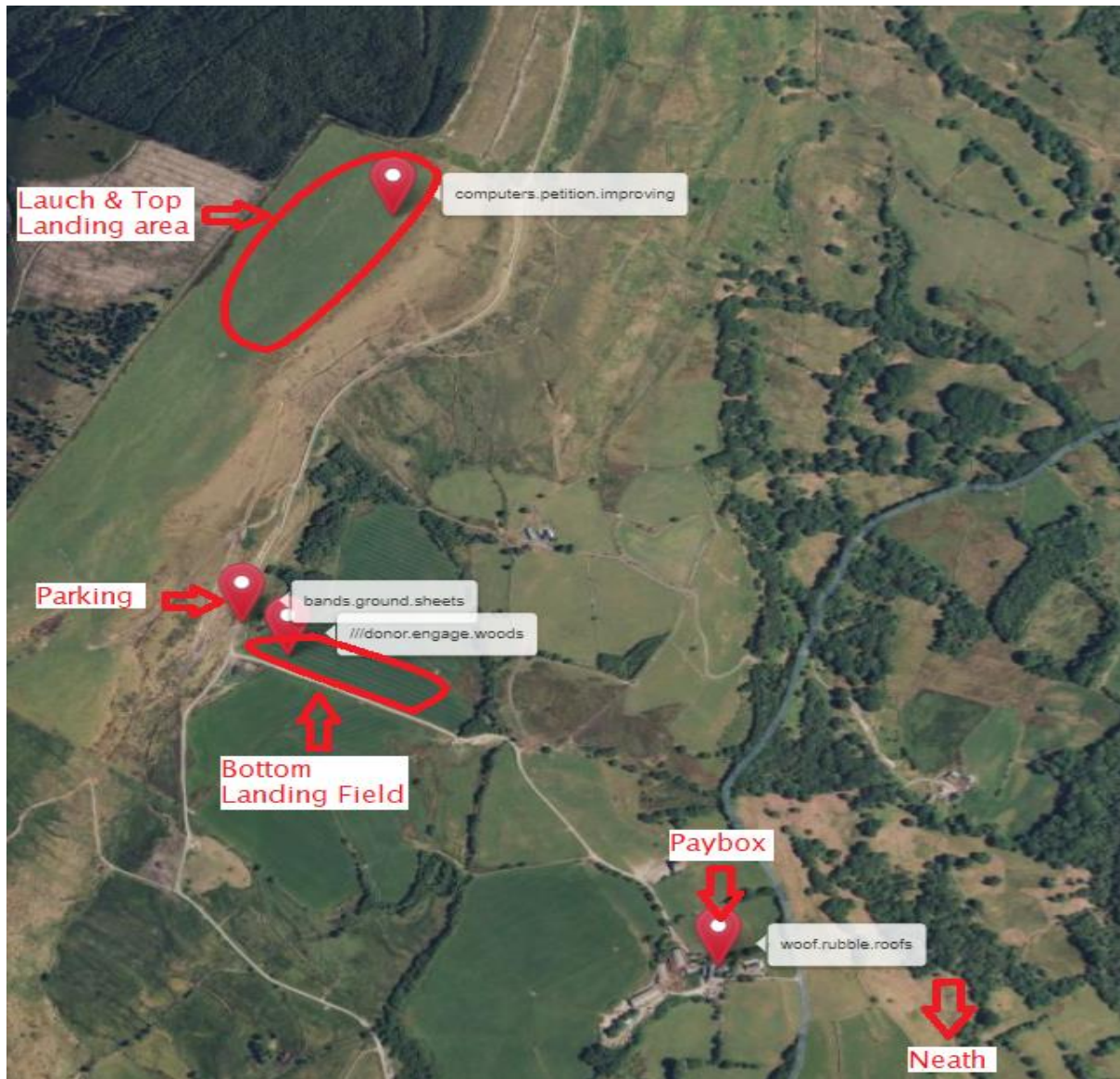
Site Comments

Good X.C potential.

Liable to sea breeze.

Remember to NOTAM/CANP if flying weekdays (check flying midweek paragraph for instruction guide)

Bryncaws (Mynydd Marchywel) Members only



Site Info

Minimum pilot rating - Club Pilot
Wind Direction - E - SE (090* - 135*)
Height A.M.S.L - 1250ft / 418m
Notam Site Code - 7.059

Directions

From M4 junction 43, take the A465 northeast towards Merthyr. Turn off left for Cilfrew at the 1st exit and take the next right turn which will take you up through a residential area and into a narrow lane which continues uphill for a further 1km until you reach a left turning that leads to Bryncaws farm. Drive into the farmyard stop and pay site fee then go left around the barn then through the gate between the buildings to the right. The track leads all the way up to the hilltop passing through several gates on the way. Park on the hilltop well back from take-off.

What3words location & Directions

Paybox - woof.rubble.roofs

Take off - computers.petition.improving

Parking - bands.ground.sheets

Landing - donor.engage.woods

Landowner & site Fees

The Stephens family own the farm and the site fee is £2.00 per person including those who accompany a pilot. whether you fly or not and is payable at the farm when you ENTER the site. You can leave your payment in the paybox.

Rules

- 1. No flying during the lambing season (Sites officer will notify dates but will be around the March & April period**
- 2. Access is permitted through Bryncaws Farm only.**
- 3. Drive carefully and please keep to the track wherever possible.**
- 4. Park carefully as to not obstruct the track.**
- 5. Leave gates as you find them.**
- 6. Do not climb over fences**

Take off & Landing

Take-off and top land anywhere along the top. Bottom land in the large fenced-off fields below the hill (see map) the ground slopes away from you Take care not to disturb livestock.

Potential Hazards

Can be rough in strong wind conditions especially with an easterly component to the wind. Make sure you have plenty of height to miss turbulence from the trees in the landing field.

After wet weather, the track can be quite slippery and at times impassable towards the top. However, if your vehicle is not suitable you may park at the bottom of the hill beside the track. Beware of farm animals in the fields alongside the track or on the farmyard. Young lambs are inclined to run towards passing vehicles and dive under the wheels.

Site Comments

Approximately 2km ridge with plenty of room to take off and land. The north end of the ridge is tree covered but works well. The proximity of the site to the coast means that in light conditions during spring and summer, sea breeze can move in sometimes as early as midday and curtail flying (although if you are in the air at the time, it can be the start of an XC flight).

The site has excellent XC potential.

Remember to NOTAM/CANP if flying weekdays (check flying midweek paragraph for instruction guide)

Cwmafan (Foel Fynyddau)

Members only



Site Info

Minimum pilot rating – Club Pilot +50hrs

Wind Direction – SE – SSW (135* - 200*)

Height A.M.S.L – 800ft – 244m (lower) / 1150ft – 350m (upper)

Notam Site Code – 7.073

Directions

Approaching from the east, leave the M4 at J41 (J42 when coming from the west) and turn onto the A48. 300m southeast of the roundabout at Baglan, take the left turning up the hill past the church. Drive up the steep hill for 1km then take the lane that branches off to the right and leads up to the Bwlch (2km), taking the left turn at an unmarked junction on the way. At the Bwlch drive up the rough track on the right and park next to the lower take-off field which will be on your right adjacent to the forest.

What3words location & Directions

Take Off (upper) – shady.tens.guess
Parking – reap.gallons.land
Landing Field #1 – scores.focus.organs
Landing Field #2 – sobs.baking.dawn.first

Landowner & site Fees

Mr Eric Lewis of Tyle'r – Fedwen Farm is not the owner of the lower take-off field that was used previously. There is no agreement with the new landowner to take off from here.

Please be always polite and courteous.

Rules

Please DO NOT park in front of or obstruct the Natural Resources Wales access barrier even on weekends as access is also required for the small holding via the barrier.

Take off & Landing

Please use the upper take off area is prone to being overgrown. There is no agreement to take off from the lower field at the moment. The bottom landing field is an elongated raised field next to a housing estate in Cwmafan.

Please check social media for updates!

Potential Hazards

Stay well clear of the masts on top. Top landings can be rather turbulent in strong conditions due to the trees. Beware of the barbed wire fence at the lower take-off. The approach to the bottom landing field is obscured from take-off and there are power lines to avoid on the way down. Slope landing below the lower take-off is best avoided – the bracken and brambles conceal rocks. Parking down alongside the Bwlch road is not recommended – vehicles have been broken into here whilst the pilots have been flying.

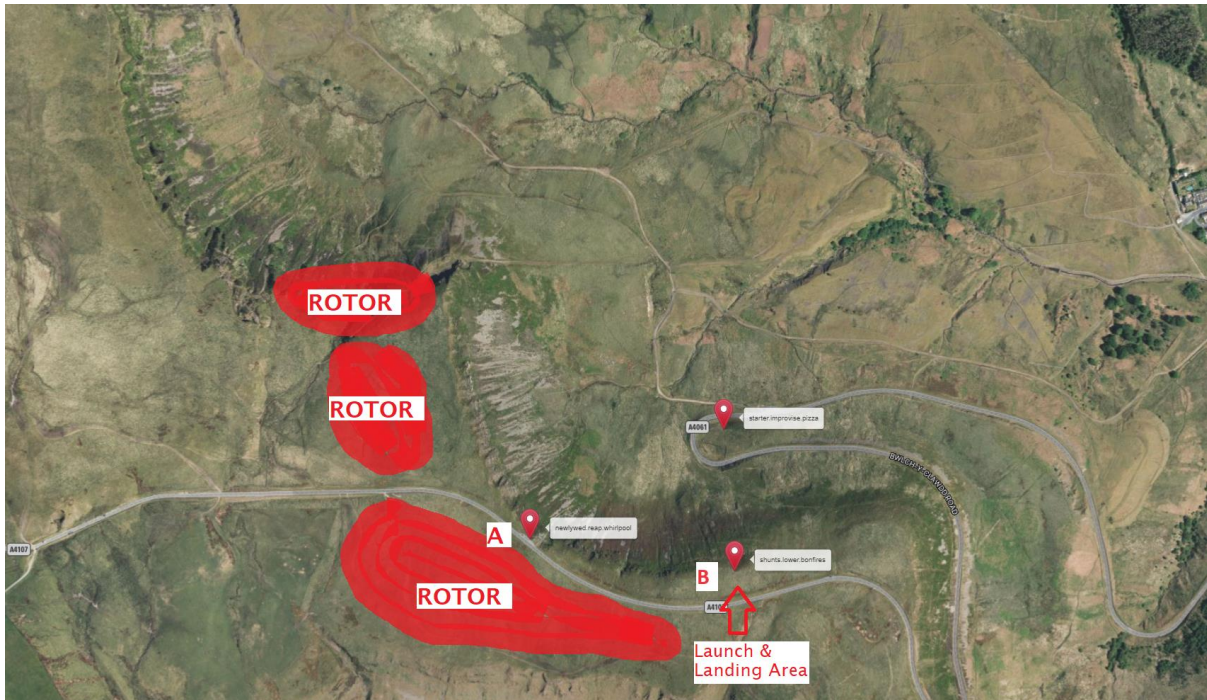
Site Comments

Despite its proximity to the coast, this hill is an excellent thermal trigger and great flying conditions can be enjoyed when the wind is due-south. However, it can also be rough and unpleasant if the wind is a little off either way. Not recommended for low - airtime or "rusty" pilots. Huge XC potential on the right day. Remember to NOTAM/CANP if flying weekdays (check flying midweek paragraph for instruction guide)

Cwmparc (Graig Fach)

Open site

(SEWHGPGC owned site with approved shared use)



Site Info

Minimum pilot rating - Pilot
Wind Direction - NNE - ENE (020* - 060*)
Height A.M.S.L - 1600ft/ 488m
Notam Site Code - 7.137

Directions

From M4 J36 at Bridgend, follow the A4061 until you get to the Bwlch Viewpoint overlooking Treorchy. Then turn left on the A4107 towards Port Talbot. Approximately 1 mile you will find a roadside car park on your right. Park here and walk down to launch.

What3words location & Directions

Take off – shunts.lower.bonfires

Parking – newlywed.reap.whirlpool

Landing field – starter.improvise.pizza

Landowner & site Fees

N/A

Rules

All fields Fenced off on the mountain are strictly out of bounds. This is a site of Special Scientific Interest – please treat it with respect it deserves.

Take off & Landing

SWWSC sites often have very large, undefined take off and top landing areas, which may change position according to conditions. Top landings at (A) is possible in light conditions but can be turbulent and the landing must be precise. Landing in those areas is only recommended for experienced and competent pilots (pilot rated +100 hours suggested). Top landing at (B) is generally easier for the less experienced or less current pilot.

Bottom landings in the flat part of the bowl are possible for paragliders and provides the easiest access to the road. Beware it can be rough low down in the bowl and it's a long and hard walk out to the road if you land away from area, or a steep (almost vertical at times) walk back up.

Potential Hazards

Severe rotor in areas marked is typical rather than possible.

Sea-breeze results in rapid switch of wind direction and severe rotor and turbulence in the bowl.

Model aircraft are often flown on this site, sometimes large (world ranking) model aircraft competitions are held here.

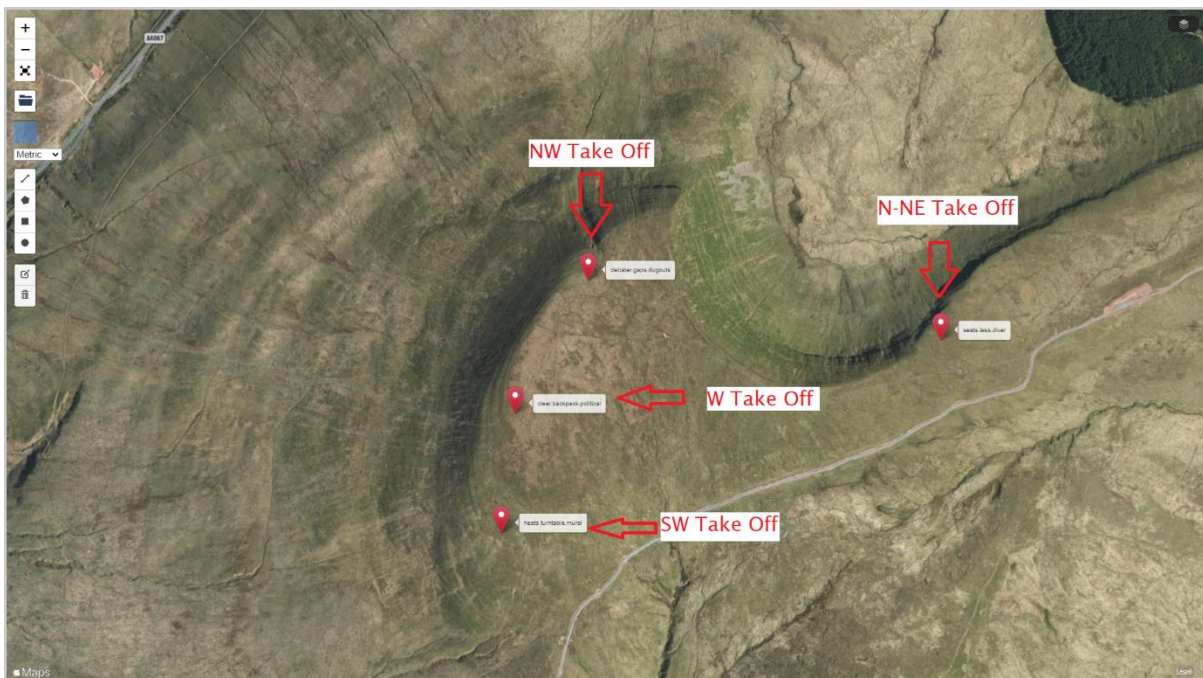
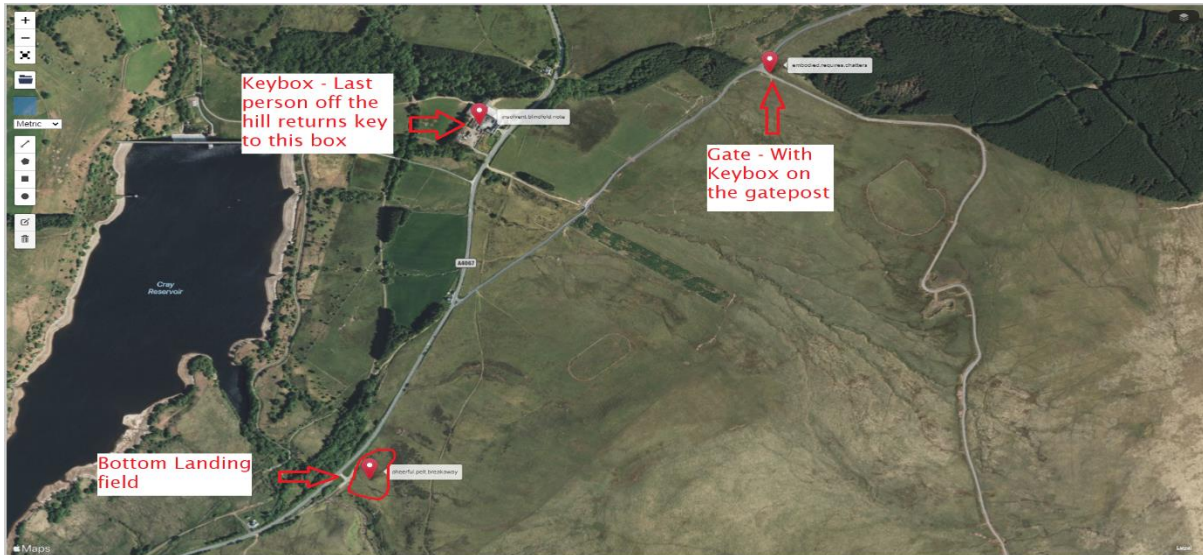
Site Comments

This site is subject to severe rotor behind the cliffs and at take-off and anywhere behind the road. It is a large bowl that requires light prevailing winds, and it can become rapidly blown out with little warning signs. The site can also be affected by sea-breeze which comes over the top of the southerly ridge and leads to severe turbulence and rotor in the bowl. It, therefore, requires some specific wind conditions and it is rarely flown by hang Gliders and only occasionally by paragliders. Late evening with light restitution type winds once the sea-breeze has receded tends to be the best (and safest) time to fly this site.

Remember to NOTAM/CANP if flying weekdays (check flying midweek paragraph for instruction guide)

Fan Gyhirych

Members only



Site Info

Minimum pilot rating – Club Pilot

Wind Direction – SW – NW - NE (220* - 050*)

Height A.M.S.L – SW 2130ft – 649m / NW 2370ft - 722m / NE 2070ft - 630m

Notam Site Code – 7.132

Directions

From M4 junction 45 drive up the Swansea Valley on the A 4067 past Dan - Yr - Ogof show caves and up and over the pass. Descend until The Cray Reservoir is on the left, Park in the lay-by on the right next to the disused bridge.

What3words location & Directions

Keysafe - insolvent.blindfold.note

Gate (Keysafe on gatepost) - embodied.requires.chatters

Take off N/NE (area) - seats.less.diver

Take off NW - debater.gaps.dugouts

Take off W - clear.backpack.political

Take off SW - heats.turntable.mural

Official Landing field - cheerful.pelt.breakaway

Parking - (please share vehicles where possible and park without blocking the track)

Landowner & site Fees

The site is part of the Cnewr Estate and is managed by James Lloyd. The club pays an annual fee to the estate.

Rules

Check the website/emails/social media for latest key access arrangements for the gate at the bottom of the access track. No more than 6 vehicles are permitted up the hill at any one time. Vehicles must keep to the track at all times but must not block it when parking. The site is closed to all flying activities in April and May each year for stock settlement. Check social media for updates.

Take off & Landing

Lots of room for T.O. and landing on top of the hill. Bottom landing is possible at the bottom of the bowl and below the S.W. take off. When bottom landing near the lay-by beware of the gully and fences.

Potential Hazards

There is always rotor behind the main bowl and on top of the hill. The area behind the SW take off is rocky.

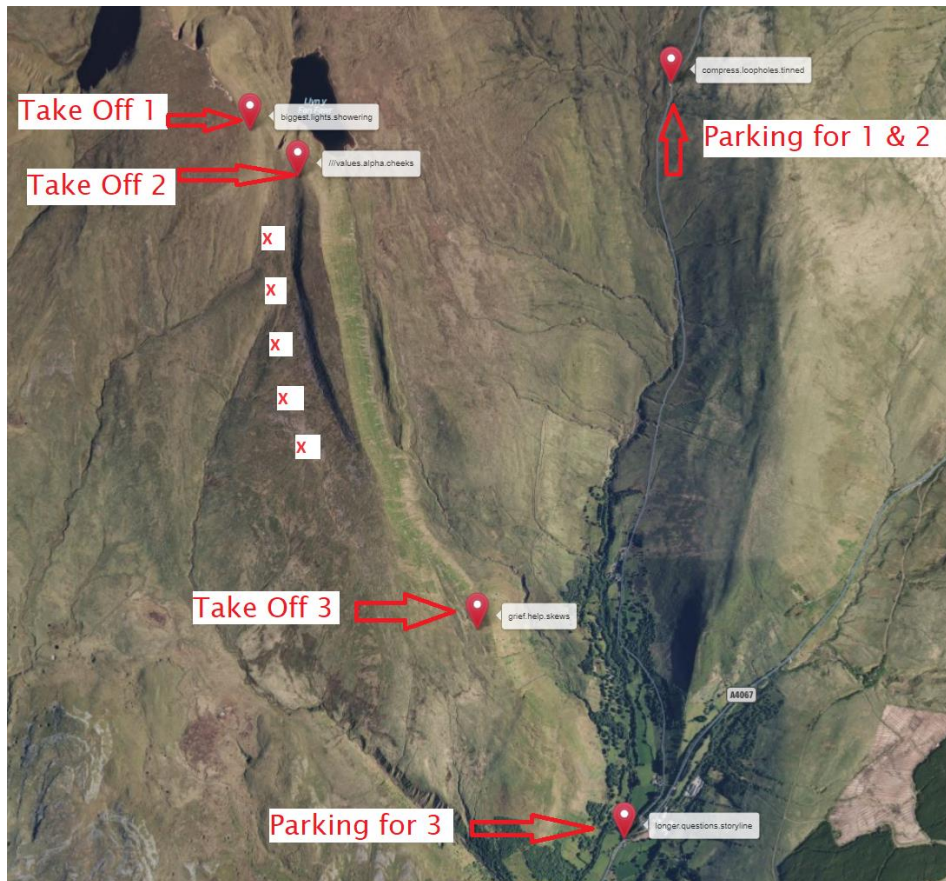
Site Comments

Excellent X.C. potential in most directions.

Remember to NOTAM/CANP if flying weekdays (check flying midweek paragraph for instruction guide)

Fan Hir

Open site



Site Info

Minimum rating - Club Pilot
Wind Direction - NNE - E (023* - 070*)
Height A.M.S.L - 2460ft/ 750m
Notam Site Code - 7.133

Directions

From M4 J45, drive all the way up the Swansea valley on the A4067 passing the Dan Yr Ogof Show caves. Before ascending towards the head of the valley, you will pass the Tafarn y Garreg pub. Park just past the pub in the layby on the right of the road (W3W longer.questions.storyline) for the lower take-off TO3, or turn left up the road and drive up the valley for 3 miles and park in the car park off the road – W3W compress.loopholes.tinned – for upper take-offs TO1 and TO2. Follow the path up the mountain as described below.

What3words location & Directions

Take off 1 – biggest.lights.showering

Take off 2 – values.alpha.cheeks

Parking for 1 + 2 – compress.loopholes.tinned

Take off 3 – grief.help.skews

Parking for 3 – longer.questions.storyline

Official Landing field – (No official landing field – read take-off and landing guide for more information.)

Landowner & site Fees

National Trust

Rules

This is mountain flying site. You must use your own judgement to decide whether to fly. Always be prepared to walk back down the mountain. Respect other mountain users. Close all gates behind you.

Take off & Landing

Take-off is possible at the South end of the Fan Hir ridge (TO3), the North end of Fan Hir (TO2) and the South end of Fan Brycheiniog (TO1). Do not attempt to take off from the main Fan Hir ridge- it has a sharp cliff edge and the wind rotors behind the front face.

For TO1 – Fan Brycheiniog – A walk of 20approx.. 3 km with 1300ft climb.

From the upper car park, follow the stream then walk up past Llyn y Fan Fawr and up the

path to the col between Fan Hir and Fan Brycheiniog. Turn right up the path towards Fan Brycheiniog. Take off from the shoulder before the summit of Fan Brycheiniog, overlooking Llyn y Fan Fawr.

For TO2 – Fan Hir North – follow the path as for TO1. Turn left at the col.

Walk up Fan Hir. Take off from the shoulder before the summit of Fan Hir.

For TO3 – Fan Hir South – A walk of 21 pprox.. 2km, 1000ft climb. Follow the footpath opposite the Tafarn y Garreg, over the footbridge, alongside the river, through the gate to the track and up to the sheep enclosure. Climb the stile to the North of the sheep enclosure onto the open fell. Walk up the steep path and turn right to walk up the ridge. Take off from the slope before the main ridge starts.

Landings are possible from the upper take-offs (TO1 & TO2) on the fell and towards the upper car park. There is no official landing field from the lower take-off (TO3). Pilots have landed in the field behind the Tafarn y Garreg pub without issues.

Potential Hazards

This is a mountain flying site.

The area behind the main ridge (marked by 'X X' on the site diagram) is affected by rotor. Do not attempt to take-off, land or fly behind the front face.

The wind strength at the North end of the Fan Hir ridge is likely to be significantly stronger than at the South take off (TO3)

Site Comments

The upper take-offs work well in light to zero wind.

The lower Fan Hir South take off can work in a light breeze.

A committed hike up to either take-off leads to a majestic 2km long ridge, with excellent light wind soaring and thermalling potential. The Fan Hir ridge can work if it is too light at Heol Senni. Fan Brycheiniog has been known to work as a thermal trigger in very light to zero wind days and can be a good starting point for out-and-return flights.

Remember to NOTAM/CANP if flying weekdays (check flying midweek paragraph for instruction guide)

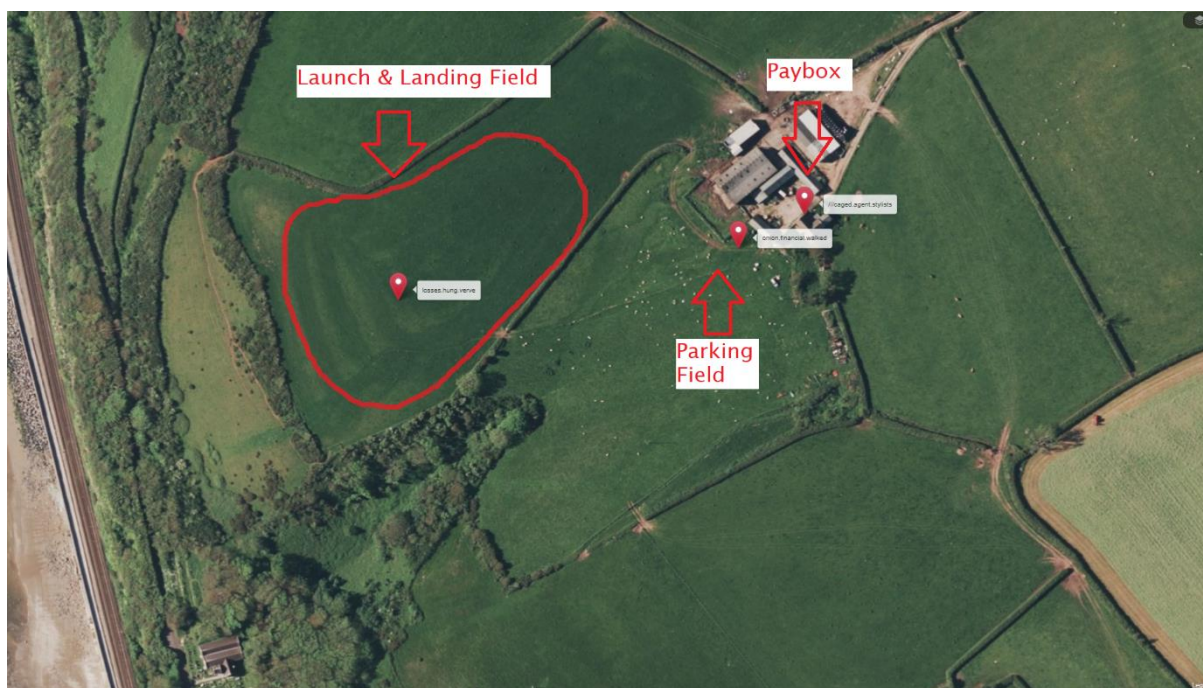
Cross Country Flying

over the back of Fan Hir is committing, with the nearest road 12km behind take-off. In good conditions, it is possible to cross from the Fan Hir ridge to Fan Brycheiniog. From here, cross country to Rhiw Wen and onwards gives breath-taking views of Llyn y Fan Fach and beyond.

(Guide written by Mr Peter Lake)

Ferryside

Members only



Site Info

Minimum pilot rating – Club Pilot

Wind Direction – SW – WNW (220* - 290*)

Height A.M.S.L – SW 300ft – 91m

Notam Site Code – 7.014

Directions

Head to Kidwelly on the A 484. Then follow signs to Ferryside along the coast road to a small village called Broadlay. Take the minor road west towards the farmhouse at the rear of the top landing area and park in the courtyard. Walk through the fields to T.O. Only approach the site from the farm.

What3words location & Directions

Paybox - caged.agent.stylists

Take off - losses.hung.verve

Parking - onion.financial.walked

Official Landing field - (Back on Take off or Beach Landing)

Landowner & site Fees

Mr Jones, Pen Y Lan Farm. £2 per person payable in Paybox on Farmhouse wall in the farmyard.

Rules

The site lies within the danger zone covered by Pembrey bombing range. If you want to fly it during weekdays phone the number (posted below in potential hazards) and ask if there are any movements or activities occurring.

First post on 'SWWSC site reports' telegram group that you intend to phone Pembrey so repeat calls don't occur. Then post the result of your call. Don't fly unless confirmed ok.

Take care not to damage any crops or disturb any livestock.

Take off & Landing

Be sure that you can clear the hedge at the front of the take-off field. This hedge can cause turbulence. Top land in the take-off field. (Wires near the farm buildings.) Bottom landing when the tide is in is not possible! No problem with the tide out but land near the railway level crossing if possible, for an easier retrieve.

Potential Hazards

The site lies within the danger zone covered by Pembrey bombing range. No flying Monday to Thursday 9am to 5pm, Friday 9am to 2pm. Notams need to be checked for evenings and weekends, as the site can become active on an "ad hoc" basis out of normal hours. The activity status of the range can be checked by phoning the following telephone number. RAF Pembrey Sands HQ: Tele. 01554-892205

Beware of wires on slope to S.E. of take-off.

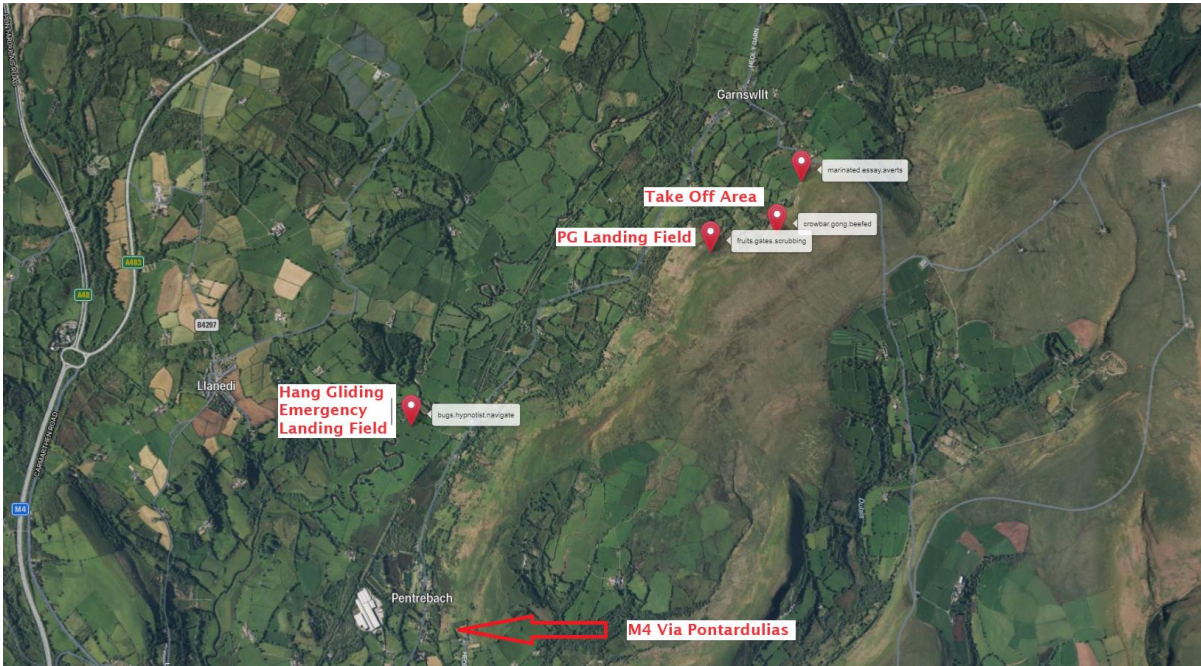
Site Comments

X.C. potential, with the tide out and in a westerly wind the estuary becomes a thermal generator.

Remember to NOTAM/CANP if flying weekdays (check flying midweek paragraph for instruction guide)

Graig Fawr

Open site



Site Info

Minimum pilot rating – Club Pilot +50hrs

Wind Direction – WNW – NNW (290* - 330*)

Height A.M.S.L – SW 820ft – 250m

Notam Site Code – 7.025

Directions

From M4 junction 48 head for Pontardulais. Take the road to Garnswllt, turn right up the hill. Just after crossing the cattle grid take the track off to the right. Within 200m the track splits. Bear left and continue for about 100m. Park in the open area to the right.

What3words location & Directions

Take off - crowbar.gong.beefed

Parking - marinated.essay.averts

PG landing field - fruits.gates.scrubbing

Hang gliding Emergency landing - bugs.hypnotist.navigate

Landowner & site Fees

The land is owned by The Duke of Beaufort. But West Glamorgan Commoners have grazing rights which must not be interfered with.

Do not do anything to upset them.

Rules

This is an EXTREMELY sensitive site. West Glamorgan Commoners association do not approve of flying activities here.

DO NOT:

Fly close to livestock.

Fly if there are lambs on the hill.

Block the track.

Drive onto the moor. (From the north or the south).

Take off & Landing

Lots of room to take off, beware of turbulence from obstructions lower down on the hillside. Expansive top landing area. Emergency HG bottom landing field lies in a bow of the river directly in front of take-off (what3words: bugs.hypnotist.navigate) there is a track down to it over the railway but there is no right of access with a vehicle.

Potential Hazards

There is no official bottom landing area. The track can be very muddy after spells of wet weather and vehicles have been known to get stuck. Vehicles have been vandalised here.

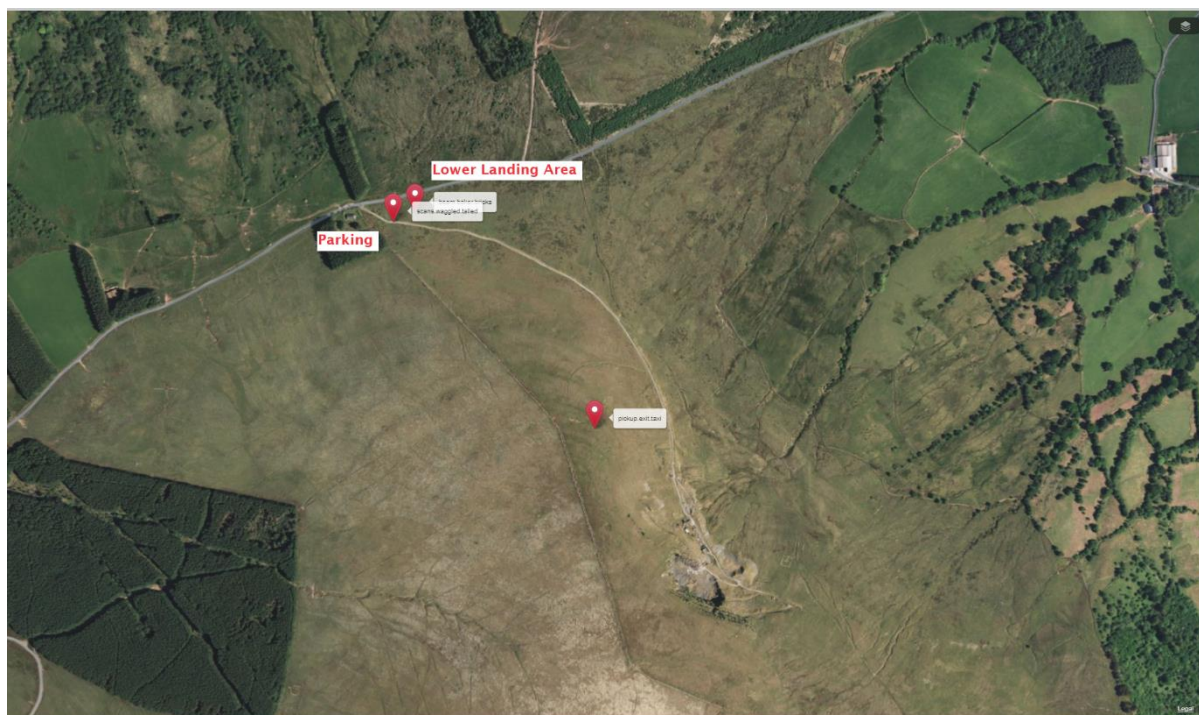
Site Comments

Essentially a thermalling site for XC - Not a soaring site. This is due to the shallow nature of the slope and turbulence from trees lower down.

Remember to NOTAM/CANP if flying weekdays (check flying midweek paragraph for instruction guide)

Heol Senni (Fan Bwlch Chwyth)

Open site



Site Info

Minimum pilot rating – Club Pilot

Wind Direction – NNE – ENE (023* - 070*)

Height A.M.S.L – SW 1750ft – 533m

Notam Site Code – 7.004

Directions

From M4 J45, drive all the way up the Swansea valley on the A4067 passing the Dan Yr Ogof Show caves and up over the mountain pass. As you pass the Cray Reservoir on your left, you will see a right-turning signposted to Heol Senni. Turn here and continue for just over 2km and turn right up a stony track just after the cattle grid. Park in a space clear of the track and walk up the hill.

What3words location & Directions

Take off – pickup.exit.taxi

(large area across the whole hill top)

Landing – beam.baker.bricks

Parking – scans.waggled.tailed

(Park along the track here. Please do not block the track)

Landowner & site Fees

Local Council. No Fee.

Rules

This is a sensitive site. Share vehicles wherever possible. Do not disturb livestock.

Take off & Landing

There is plenty of room for taking off at either end of the quarry but the slope at the south end is of a gentler gradient and therefore easier to manage in strong conditions. Top landing in front of the wall is quite tricky, but it is okay to land behind the wall if necessary (except behind the quarry where turbulence will be encountered).

Potential Hazards

If the wind is not directly on the quarry – there will be turbulence – do not fly low over the quarry in strong conditions, beware the dry-stone wall and barbed wire fence behind take-off, many gilders have been damaged here over the years. The bottom landing area below the hill slopes away deceptively.

Low flying military aircraft frequent the area during the week – Use the Notam/CANP service!

Site Comments

An excellent site for thermalling and cross country flying over friendly terrain. The ridge itself is fairly short and can get a bit crowded in light soaring conditions. Good evening restitution in summer allows flights till sunset.

Bare in mind that if you are planning an XC flight from here during the stock resettlement closure of

the adjacent Fan Gyhirych site (April & May - check social media for lambing closures) you will not be able to land there. If you have to “bomb out” in an emergency on the Cnewr Estate land during this closure period under no circumstances, should you attempt to relaunch, and you will be required to walk out on foot.

Remember to NOTAM/CANP if flying weekdays (check flying midweek paragraph for instruction guide)

Lletty Siac (Mynydd Marchywel)

Members Only



Site Info

Minimum pilot rating – Club Pilot

Wind Direction – W – WNW (250* - 290*)

Height A.M.S.L – SW 800ft – 244m

Notam Site Code – 7.059

Directions

Follow the directions for Bryncaws. At the top of the track drive straight on until you reach the fence and park.

What3words location & Directions

Take off – yarn.lace.salmon

Landing – N/A (Various below take off)

Parking – kiosk.playroom.remain

Landowner & site Fees

Landowner - John Slee of Banwen Farm.

Site Fee - Pay £2.00 for the use of the track and parking to Bryncaws farm when you ENTER the farmyard. Instructions as per Bryncaws guide.

Rules

Follow the same rules as Bryncaws, respecting lambing season on Bryncaws!

Keep the track and gateways **clear at all times**.

Take off & Landing

Walk along the track at the edge of the forest to the take off. Top land behind the fence near the cars. It is also possible to top land in a clearing in the forestry. It is possible to bottom land on the track at the bottom of the hill.

Potential Hazards

Rocky to the left of take-off. Beware of fences, it is also very boggy at the bottom of the hill.

Site Comments

Essentially a thermalling site for XC - Not a soaring site. This is due to the shallow nature of the slope and turbulence from trees lower down.

Remember to NOTAM/CANP if flying weekdays (check flying midweek paragraph for instruction guide)

Marros Down

Members only



Site Info

Minimum pilot rating – Club Pilot

Wind Direction – SSW – SSE (165* - 195*)

Height A.M.S.L – SW 500ft – 152m

Notam Site Code – 7.093

Directions

From Pendine follow the B4314 towards Amroth. At St. Lawrence's Church, Marros follow the farm track for approximately 1/3 of a mile to the gate on the right. Go through it up to Marros Lodge. Pay the fee and continue to the parking area by the take-off field.

What3words location & Directions

Pay Box (£5 – Per person including non flyers)- violin.apartment.awakes

Take off - requested.rich.bulletins

Parking – shack.blend.abstracts

Official Landing field - (Top landing or Beach)

Landowner & site Fees

Landowner Mr. Nick Turner of Marros Lodge. £5 per person is payable on ENTRY to the site. Put the fee in the black box marked SWWSC attached to the gate by the farmhouse. See picture guide for the exact location. He is not always present at the sites but has CCTV surveillance in situ.

Rules

Cars must be parked in the area marked 'car park' on site plan, to the rear of the launch field. Be aware that there are horses in the field opposite Marros Lodge, which may be spooked by paragliders. The hen houses in the area should also be given a wide berth.

Take off & Landing

In the designated field marked take-off on site plan.

Potential Hazards

A wire fence/hedge runs along the bottom of the take-off field. **Possible rotor caused by the hedge.** Bottom land on the beach only as a last option as (a) it's tidal and (b) there is no public access up from the beach; most tracks in the vicinity of the beach are privately owned. A string of telegraph wires runs down below the ridge to the east of take-off.

Site Comments

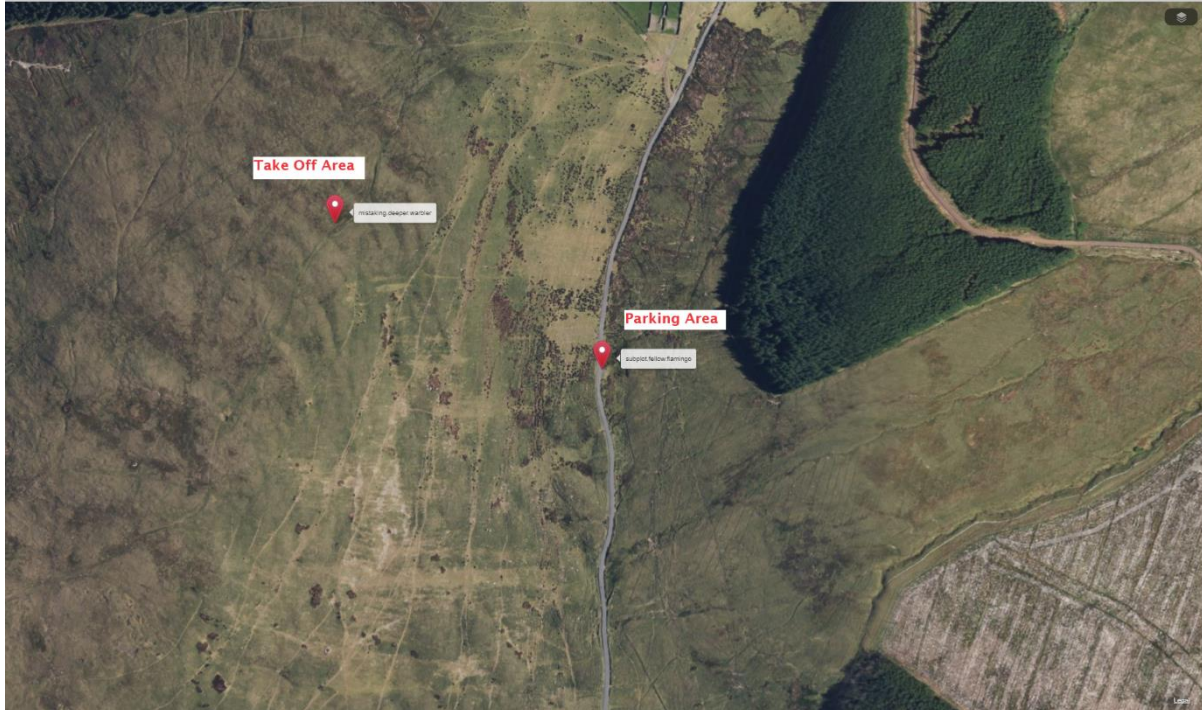
Good soaring with long ridge runs. Easy access and pretty views from Worms Head to Caldey Island.

Be aware that although it is possible to bottom land on the beach. The tracks that lead back to take off are privately owned and no official negotiations have taken place to sanction their use. A site brief by an experienced pilot will give you pointers on how to get back to the take-off.

Remember to NOTAM/CANP if flying weekdays (check flying midweek paragraph for instruction guide)

Moel Feity

Open (Training site)



Site Info

Minimum pilot rating - Club Pilot

Wind Direction - E - (090*)

Height A.M.S.L - SW 1500ft - 457m

Notam Site Code - None

Directions

From M4 junction 45 drive up the Swansea Valley on the A 4067 past Dan Yr Ogof show caves and take the Trecastle road opposite the Tafarn Y Garreg pub. After 5.5km park in the lay-by on the right.

What3words location & Directions

Take off – mistaking.deeper.warbler

Parking – subplot.fellow.flamingo

Official Landing field – N/A

Landowner & site Fees

There is no formal arrangement to fly here but the farmer seems happy to see us flying here so be polite if approached.

Rules

No rules but park sensibly and don't disturb livestock.

Take off & Landing

Walk up the hill and take off where the hill starts to level out. When bottom landing near the lay-by beware of the road and if gliding out beware of the trees.

Potential Hazards

In light winds it is possible to fly very low over the road, be aware of traffic.

Site Comments

This site is suitable for ground handling and forward launch practice in nil to very light winds.

Newgale

Open site



Site Info

Minimum pilot rating – Club Pilot
Wind Direction – W (260* - 280*)
Height A.M.S.L – 141ft – 43m
Notam Site Code – No code. When you phone up, let them know you are flying Newgale beach.

Directions

If heading to fly at Newgale from the east. Head towards Haverfordwest on the A40. Then take the A487 to Newgale. The what3words will get you there as efficiently as possible to Maidenhall car park.

What3words location & Directions

Take Off A – finds.stalemate.camera
Take Off B – stunt.send.mixing
Take Off C – complain.foremost.essential
Parking – huddled.hammocks.goose
Landing Areas – Left and right of path from the car park to the take-off areas

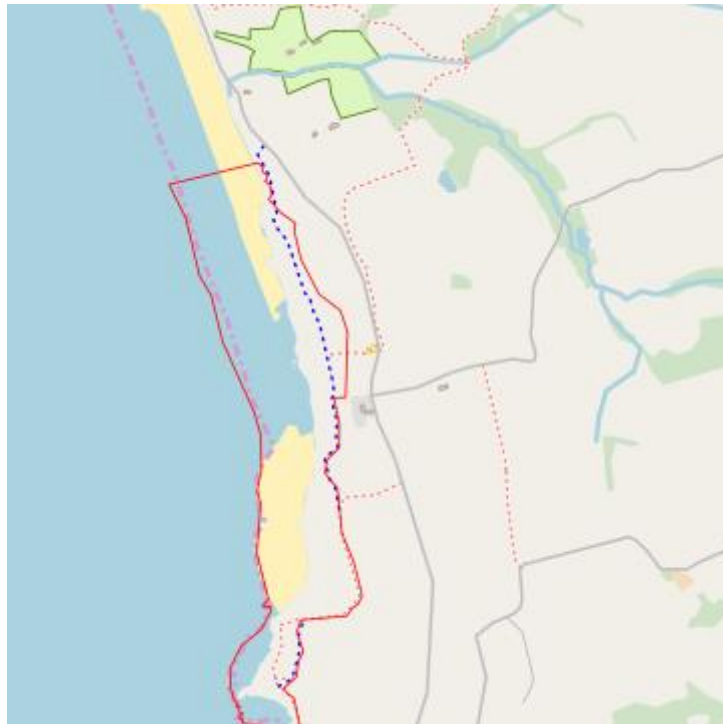
Landowner & site Fees

The National Trust are the owners and custodians of the hill, the beach and the cliffs. The SWWSC pay an annual fee to the Trust for a permit to fly here.

Rules

Please DO NOT park in front of or obstruct the Natural Resources Wales access barriers

It is a beautiful site, which is surrounded by SSSI areas. This is a very sensitive site. Please stick to the take-off and landing fields.



Areas marked in red on the front of the launch areas are SSSI Please don't take off or land in this area unless in an emergency.

Take off & Landing

Take off and landing are permitted in areas A and C and the landing field marked on the pic below. There is an agreement with the National Trust not to land on the beach, unless it is absolutely necessary due to wind lift dying off.

Potential Hazards

Barbed wire fence behind Take Off 'A'

Uneven ground on Take Offs with gorse and bracken.

Be aware of old mine shaft air vents that could be hidden in the bracken

Be aware if wind is off from due West (270*) there is potential of rotor behind any cliffs facing into wind.

Site Comments

This site has wonderful views and can be enjoyed by those ridge soaring. There is a ridge run that has been done in the past from Newgale down to Broad Haven and back by experienced pilots.

Rhiw Wen (Tair Carn Uchaf)

Open site



Site Info

Minimum pilot rating – Club Pilot

Wind Direction – NNW – NNE (335* - 025*)

Height A.M.S.L – SW 1950ft – 594m

Notam Site Code – 7.111

Directions

From M4 J45 take the A4067 up the Swansea Valley to Pontardawe. Follow the A474 to Ammanford, at the Guan-Cae-Gurwen turn right onto the A4069 to Upper Brynamman. In Upper Brynamman turn left at the mini-roundabout following the A4069 to Llangadog. The road winds up over the Black Mountain and 500m past the top and going downhill, you will see a large car park and viewing point. Park here, cross the road and walk up to the take-off.

What3words location & Directions

Take off – wiggly.daffodils.tightest

Parking – jots.irrigated.basher

Official Landing field – unfit.obvious.inquest

Landowner & site Fees

Brecon Beacons National Park Authority no fee.

Rules

No Rules – Except Good Flying Etiquette.

Take off & Landing

Take-off is a small flat area near the top of the slope 200m to the west of the car park. The bottom landing area is situated beyond the hairpin bend in the road below take-off.

Potential Hazards

Slope landing can be tricky on the rocky and uneven slope.

Military aircraft frequent the area during the week. Use the freephone Notam/CANP service!

Site Comments

A very interesting and picturesque landscape to fly over. Good XC potential with various options but a large area of sinking air has to be negotiated shortly after going over the back.

Remember to NOTAM/CANP if flying weekdays (check flying midweek paragraph for instruction guide)

Rhossili

Members only



Site Info

Minimum pilot rating – Club Pilot

Wind Direction – WSW – WNW (250* - 290*)

(Rhossili Cliffs – NW - N (315%-360%))

(Rhossili Cliffs – Experienced Pilots only +50hrs)

Height A.M.S.L – Pimple 400ft/122m -Top 600ft/183m

Notam Site Code – 7.013

Directions

From M4 J42 take the A483 into Swansea then follow the A4067 along the seafront towards Mumbles. 2km before Mumbles turn right onto the B4436 following the signs for South Gower. Turn right at Pennard Church and then, after 1km turn left onto the A4118. Follow this road all the way to Scurlage then turn right for Rhossili on the B4247.

What3words location & Directions

Top Take off - nips.submits.applause

Lower (pimple) Take off - pixies.toads.magpie

Parking (Church) - narrating.juggle.initiates

Parking (National Trust) - itself.channel.commended

Official Landing field - (Top launch, The pimple and The beach are the only landing areas. Everywhere else is out of bounds. If anyone lands on any area but those stipulated, we could lose this beautiful site. Please don't land anywhere out of bounds.)

Landowner & site Fees

The National Trust are the owners and custodians of the hill, the beach and the cliffs. The SWWSC pay an annual fee to the Trust for a permit to fly here. This is a member only site for the foreseeable future as requested by the National Trust.

Rules

[This is a very sensitive site please read this guide carefully](#)

- * Park only in the designated car parks. Access to the hill must be kept clear for emergency vehicles.
- * Do not take off if the tide is coming in and very little beach left to bottom land.
- * There is to be no taking off when/if orographic cloud is forming on the hill. If you are in the air when it starts to form, you are required to stay out front well away from the cloud or land as quickly and safely possible.
- * Take-offs and landings are only permitted on the designated areas. Familiarise yourself using the maps provided.

- * No launching or landing on the cliffs. Turbulence behind the lip of the cliffs is extremely dangerous and out of bounds.
- * Under no circumstances must the “raised beach” be used for launching or landing. This is the grassy plateau that lies between the base of the hill and the sandy beach. There is no excuse for landing on the raised beach as a vast sandy beach lies in front with plenty of room to bottom land. The raised beach is designated as a Site of Special Scientific Interest.
- * Under no circumstances must the face of the raised beach be used for the purposes of foot launching with the intention of soaring the raised beach in strong winds. This is due to concerns about the erosion of the face itself.
- * Use only the designated official footpaths to walk back up from the beach. Do not attempt to pack up on, nor take shortcuts over the raised beach.
- * Pilots may be asked to produce their BHPA and prove SWWSC membership.

Take off & Landing

There are two dedicated take off areas. One at the pimple and one at the top of the hill. what3words will get you to either take off. Launching and top landing is only permitted in these two areas.

Bottom landing is only permitted on the sandy beach but be aware of the public when landing. The first 1/3 of the beach is the busiest.

Setting up, bundled wings and packing up is done around the edges of the launch and landing areas.

Do not set out on launch/landing until you are ready to fly.

Flying of kites on launch/landing areas when pilots are in the air is unsafe and could cause an accident (please don't be the cause of one).

Wingovers and constantly hanging over the launch area is intimidating to all pilots, especially new and inexperienced pilots. It isn't good when it is busy on the hill. Please refrain from doing this.

Exercise good etiquette and be respectful as it can get very busy.

Do not use the raised beach for launching or landing it is forbidden.

Do not use the cliffs for launching or landing it is forbidden.

Potential Hazards

During morning and evening high tides the tide comes in very quickly to leave the beach mostly under water. It is however still possible to bottom land unless the high tide is exceptionally high.

Pilots must endeavour not to get blown back when flying along the cliffs. Severe turbulence occurs in the lee of the cliffs. Only experienced pilots should attempt to soar the cliffs. Orographic cloud can form on the hill with rapid changes to its volume and density

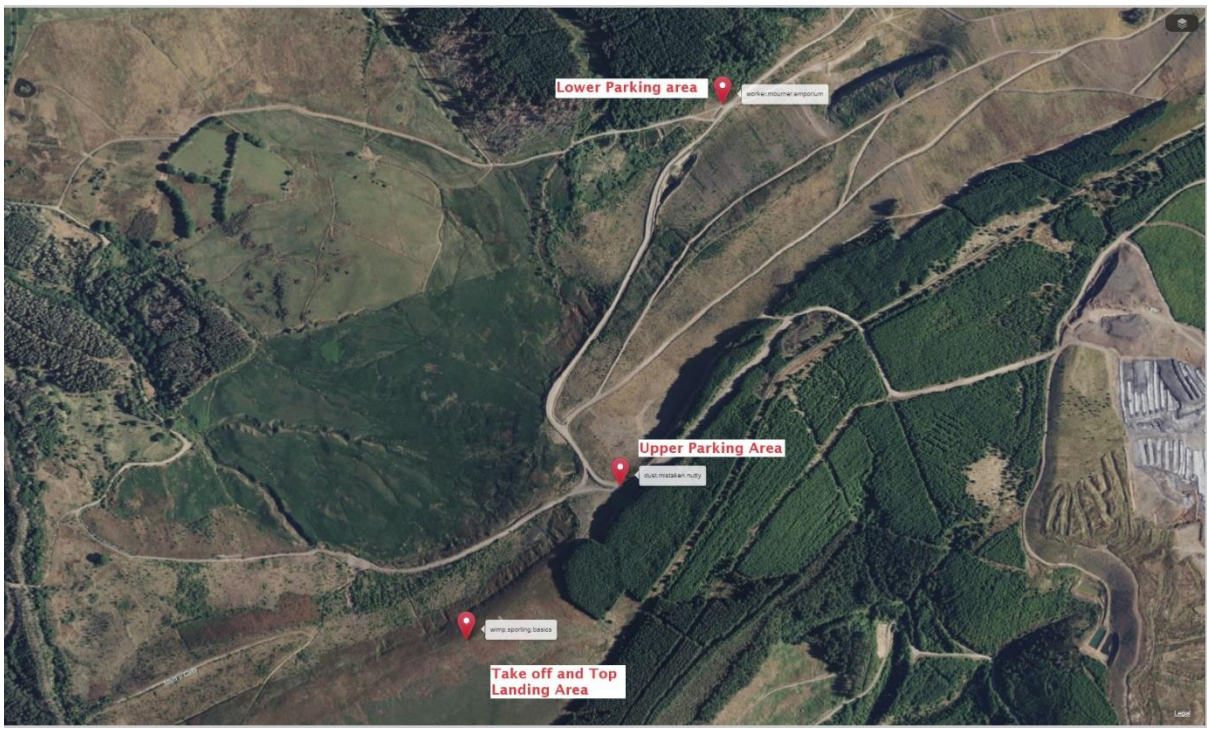
Site Comments

Rhossili is a premier coastal soaring site in an area of Outstanding Natural Beauty and is of national importance. We are privileged to fly here. There is limited XC potential. Alternative things to see and do if it is not flyable. Rhossili is owned by the National Trust and is a very sensitive site. In the past, due to incidents and site rule infringements, this site has come very close to being lost to free flying. We ask that all club members take an active role in ensuring the site is safeguarded and our permit to fly there is not compromised. Wardens are always present and rule infringements do not go unnoticed. You would make yourself extremely unpopular in the paragliding community if you are unable to follow a few simple easy to follow rules and your behaviour leads to the loss of this stunning site

Remember to NOTAM/CANP if flying weekdays (check flying midweek paragraph for instruction guide)

Seven Sisters (Hirfynydd)

Members only



Site Info

Minimum pilot rating – Club Pilot

Wind Direction – NW – N (310* - 360*)

Height A.M.S.L – SW 1360ft/396m

Notam Site Code – 7.038

Directions

From Neath take the A465 towards Merthyr. At Glyn Neath take the A4109 towards Seven Sisters, once in Seven Sisters turn left by the building marked St John (SA10 9BA) and proceed to the locked gate.

What3words location & Directions

Take off - wimp.sporting.basics

Parking (lower) – worker.mourner.emporium

Parking (upper, 4x4 needed) - dust.mistaken.nutty

Official Landing field - N/A

Keys For Gates

There is 1 key in the safe (as per email previously sent out), use this key to open the first gate.

If you are intending flying here check social media/Telegram State a meeting time so others can join you.

There are issues at the moment with keys at this site. Please don't leave key for others under a rock or hiding spot. If you have the key. Keep a hold of it until depositing it back to the keybox at the house.

These keys are security coded and supplied in good faith by Natural Resources Wales.

Do not take these keys home or attempt to copy as this could result in us losing access all together.

Please remember to lock gates when going through and not to let unauthorized vehicles entry.

Key safe Code is emailed to each member when it is changed periodically, please do not share with non-members.

The last car off the hill makes sure all keys are left at the bottom key box. No keys to be left in the top box overnight.

Key safe 1 - jumped.motion.handicaps

Gate 1- solicitor.vehicle.product

Gate 2 - adopters.crunching.amount

Landowner & site Fees

Natural Resources Wales own the track, and the take-off is privately owned.

Rules

Park carefully to avoid blocking any tracks. Cross any fences carefully and don't cause any damage.

Take off & Landing

Take-off no problems. Top landing is easy on the large flat area in front of the trees. Slope land if you need. Lower landing is at your discretion, it has very few options and can result in a long walkout and possible injury in the tall grass. The ground is deceptive and slopes away.

Potential Hazards

Don't get blown back, there are thousands of trees behind and you will get rotor and very turbulent air.

Site Comments

3km ridge with a beautiful view over the valley. Generally smooth but can get rough in thermic conditions. X.C potential is good.

Remember to NOTAM/CANP if flying weekdays (check flying midweek paragraph for instruction guide)

Southern Down

Open site

(Shared with SEWPGHGC)



Site Info

Minimum pilot rating - Pilot

Wind Direction - SW (200* - 230*)

Height A.M.S.L - 140ft / 42m

Notam Site Code - 7.115

Directions

South of Bridgend take the B4265 to St Brides Major. Then Head out on the B4524 towards Southerndown. Park in the Car park above Dunraven Bay. Don't forget to pay for the car park.

What3words location & Directions

Take off 1 - proceeds.backers.mows

Parking 1 - wordplay.snooping.town

Take off 2 - pavilions.debut.landmark

Parking 2 - relished.mouse.digested

Landing - (Either top land at launch spots or beach landing. SSSI areas all along the top and bottom of the cliffs)

Landowner & site Fees

Vale of Glamorgan Council. Site Not negotiated

Rules

Do not climb fences and be respectful and courteous.

Do Not fly from the beginning of April to the last week of May. Due to Nesting Season for Coughs (pronounced "Chuffs").

Only Fly when the tide is far enough out, to provide adequate landing room in the bay.

Take off & Landing

Take- off is in front of the car park but watch the rotor. Top landing is in the same area but again be aware of the rotor, fences, people, dogs and benches. They could all cause injury.

Take-off is also possible to the west of the car park take-off. Just passed the stone house overlooking the cliffs (the stone house will be on your left on take-off).

Potential Hazards

There is strong rotor behind the cliffs, requiring extreme caution in stronger winds.

Site Comments

This site is not negotiated so please be polite and deny everything...

Do Not land on any SSSI areas

This guide is not to tell you to fly here. It's just a guide and you make your own informed choice if you want to fly here.

Remember to NOTAM/CANP if flying weekdays (check flying midweek paragraph for instruction guide)

*New sites to be added in the near future. Include – Aberavon Dunes and Swansea Dunes.

<u>Issue Number</u>	<u>Description of Change</u>	<u>Date</u>
1 Initial Draft	Initial Draft	June 2011
2 Issue 1	Update following comments from committee members	October 2011
3 Issue 2	Update Preseli's and Lletti Siac	April 2012
4 Issue 3	Update Rhossili. No Flying when orographic cloud is forming	February 2013
5 Issue 4	Update: Lambing at Abernant	May 2013
6 Issue 5	Introduction of Google Earth Images and Picture Guides. Rule Updates, Site Status Updates, Information Updates and Google map Links	March 2017
7 Issue 6	Update: Rules and information, Sites wind Rose, New sites.	August 2019
8. Issue 7	Update: Rules and information, New sites, New Pics, Mountain names added and What3words info added. QR code for membership added	June 2024